

Universal

York **Building Products** is an architectural concrete masonry manufacturer located in South Central PA. Our close proximity to the mid-Atlantic marketplace affords you the opportunity to specify our products with confidence, knowing that fast, efficient delivery helps keep your project costs under control. We are members of the National Concrete Masonry Association, US Green Building Council and multiple chapters of AIA. Our industry involvement provides us the opportunity to engage leaders on many levels, gaining valuable expertise in manufacturing as well as trend tracking. We look forward to serving your project needs and have LEED® AP staff ready to assist and consult with you at a moment's notice. Reach out to us at 800.673.2408 or sales@yorkbuilding.com. You can also visit our website at www.yorkbuilding.com to download valuable specification information, view colors & finishes, and preview all of our products.



Contents

3 Architectural Finishes

- 4 Split Face Standard & Premium Series
- 6 YorkLite®
- 8 Rustic Face
- 10 Gemstone®
- 12 Gemstone Plus®

14 Specialty Products

- 15 Concrete Lintels
- 16 Titan Series®
- 18 Susquehanna Stone™
- 20 Vintage Series Brick™
- 21 Master-Brik™
- 22 Ivory® Block
- 22 SoundBlox®
- 23 NRG Insulated CMU
- 23 Hi-R® Insulated CMU
- 23 Korfil® Insulated CMU
- 24 Workrite® Colored Mortar

25 Technical Guides

- 25 Masonry Shapes
- 25 Edge Codes
- 26 Specifications
- 28 Design Assistance



York Building Products

950 Smile Way,
York, PA 17404

Phone: 800.673.2408

Fax: 717.854.9156

www.yorkbuilding.com

Architectural Finishes

Split Face Standard & Premium Series

The Split Face Concrete Masonry Unit (CMU) is a consistently popular architectural masonry unit finish because it offers a uniquely textured face and can be manufactured in a variety of integral colors or as a paint grade product. Because of the manufacturing process of a split face block, no two units are exactly alike. This offers aesthetic depth to building design.

Our split face masonry units can be used for loadbearing or veneer applications and they coordinate well with other architectural CMU finishes.

Split face masonry units are thermally massive, sound absorbent and fire resistant- making it a preferred product in the construction of commercial projects such as theaters, schools, office buildings and municipal facilities. Manufactured in specified densities, they conform to ASTM C90 standard for loadbearing concrete masonry units.

Our **Premium** colors are typically made with white cement, include more specialty aggregates and incorporate bolder pigments. You will find these same colors represented throughout all our finishes, so mixing and matching finishes on your project is simple. Like all of our masonry finishes, Split Face units are produced with a moisture repellent admixture.

Our **Standard** colors feature a simplified mix design, providing a more economical solution for tight-budget projects.

Split Face Premium Colors



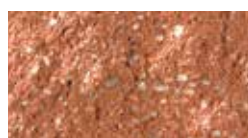
Arctic White*



Parchment



Chamois



Terracotta



Brick Chip



Silver



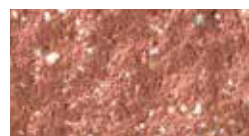
Putty



Sahara



Gingerbread



Bermuda



Charcoal



Camel



Saddle



Port



Crimson

Split Face Standard Colors



Glacier



Khaki*



Mojave*



Fieldstone



Rust



Ash*



Buff



Walnut*



Tuscany



Salmon



Flint*



Rye



Cinnamon



Claret



Tabasco

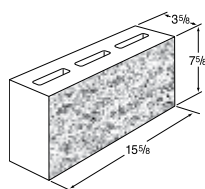
Split Face Stocking Program

To assist masons & designers on fast-track projects, we have selected our most popular sizes and colors of split face CMU, and stocked them for immediate delivery. This means no special order delays, no minimum quantities, and no set-up charges. We also stock our Workrite® Colored Masonry Cement in Type-S matching colors to make it a complete turnkey solution. We now stock the following colors in the following shapes/sizes:

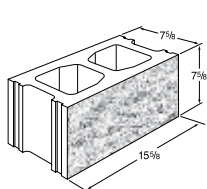
Stocked Colors*: Mojave, Arctic White, Flint, Walnut (Swatches shown above outlined in black.)

Stocked Shapes/Sizes:

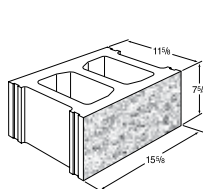
4D x 8H x 16W Stretcher



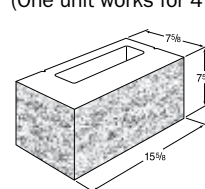
8D x 8H x 16W Stretcher



12D x 8H x 16W Stretcher



8D x 8H x 16W Universal Corner
(One unit works for 4", 8" and 12" walls.)



Recycled-Content CMU

YorkLite®

Our YorkLite CMU products are made with certified recycled light weight materials to provide a structural solution for LEED® certified buildings or other sustainable projects.

Shown here in Split Face, YorkLite units are available in standard gray concrete, or six earthen colors. Custom colors can be produced to meet your project's specific needs. YorkLite CMU can be produced in any of our face finishes.



Featured: The Salon at Stonebridge, New Freedom, PA
YorkLite® in Iron Ore

YorkLite® Colors



Aluminum



Steel



Topsoil



Cardboard



Iron Ore



Redwood



POTENTIAL LEED® CREDIT CONTRIBUTION FOR CONCRETE MASONRY

CREDIT #:	DESCRIPTION	POINT CONTRIBUTION
-----------	-------------	--------------------

Sustainable Sites: 6 points

Credit 2	Development Density & Community Connectivity	Points: 1
Credit 5.2	Maximize Open Space	Points: 1
Credit 6.1	Storm Water Design, Rate & Quantity Control	Points: 1
Credit 6.2	Store Water Design, Treatment	Points: 1
Credit 7.1	Heat Island Effect, Non-Roof	Points: 1
Credit 7.2	Heat Island Effect, Roof	Points: 1

Energy & Atmosphere: Up to 10 Points

Credit 1	Optimize Energy Performance	Points: 10
----------	-----------------------------	------------

Indoor Environmental Quality: Up to 4 Points

Credit 3.1	Construction IAQ Management Plan, During Construction	Points: 1
Credit 4.1	Low-Emitting Materials, Adhesives & Sealants	Points: 1
Credit 4.2	Low-Emitting Materials, Paints & Coatings	Points: 1
Credit 7.1a	Thermal Comfort, Design	Points: 1

Materials & Resources: Up to 11 Points

Credit 1.1	Building Reuse, Maintain 75% of Existing Walls, Floors & Roof	Points: 1
Credit 1.2	Building Reuse, Maintain 100% of Existing Walls, Floors & Roof	Points: 1
Credit 1.3	Building Reuse, Maintain 50% of Interior Non-Structural Elements	Points: 1
Credit 2.1	Construction Waste Management, Divert 50% from Disposal	Points: 1
Credit 2.2	Construction Waste Management, Divert 75% from Disposal	Points: 1
Credit 3.1	Materials, Reuse 5%	Points: 1
Credit 3.2	Materials, Reuse 10%	Points: 1
Credit 4.1	Recycled Content, 10% (post-consumer + 1/2 pre-consumer)	Points: 1
Credit 4.2	Recycled Content, 20% (post-consumer + 1/2 pre-consumer)	Points: 1
Credit 5.1	Regional Materials, 10% Extracted	Points: 1
Credit 5.2	Regional Materials, 20% Extracted	Points: 1

Innovation & Design: Up to 4 Points

Credit 1.1	Innovation & Design, Structural Advantages	Points: 1
Credit 1.2	Innovation & Design, Life-Cycle Benefits	Points: 1
Credit 1.3	Innovation & Design, Acoustic Performance	Points: 1
Credit 1.4	Innovation & Design, Improved Air Quality	Points: 1

Note: The Innovation and Design Credits are awarded for exceptional performance above LEED requirements.

Rustic Face

Our Rustic Face CMU features a textured face generated by blasting small pellets at the surface of the unit. This shot blasting produces a final product that leaves the larger pieces of aggregate in place while the very fine sandy portion of the surface is removed. This effect provides a weathered, rustic appearance to a building envelope.

Rustic face masonry units are manufactured in the same variety of sizes and shapes as our other architectural block and are available in our fifteen premium colors.

Rustic face masonry units conform to ASTM C90 standard specification for loadbearing units and can be used in veneer applications as well. Like other concrete masonry units, it is fire resistant and thermally massive.

Rustic Face Colors



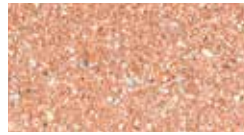
Arctic White



Parchment



Chamois



Terracotta



Brick Chip



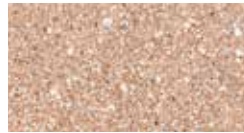
Silver



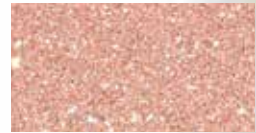
Putty



Sahara



Gingerbread



Bermuda



Charcoal



Camel



Saddle



Port



Crimson



Ground Face CMU

Gemstone®

Featured: Chipotle Mexican Grill, Camp Hill, PA.
Gemstone® in Charcoal.